

Contents

- NZQA to monitor financial performance for all PTEs
- Revised structure for Quality Assurance Division
- Key transition dates for New Quality Assurance Framework
- Reminders

QAD Website

Contact Us

[Provider enquiries](#)

[Course approvals enquiries](#)

[Student fee protection enquiries](#)

0800 QAHELP

Back Issues

NZQA to monitor financial performance for all PTEs

NZQA and the Tertiary Education Commission (TEC) have confirmed that NZQA will monitor the financial management practices of private training establishments through the annual return and associated processes.

Details will be available soon on the NZQA website at:

<http://www.nzqa.govt.nz/for-providers/tertiary/index.html>

The underlying principle is that, while NZQA has a statutory responsibility to ensure that all providers meet the gazetted criteria for maintaining registration, individual providers are responsible for their own financial viability.

Revised processes

Previously, TEC undertook financial viability assessments for funded providers, while NZQA monitored the financial management practices and performance of non-TEC funded providers as a requirement of ongoing registration and accreditation.

From July 2009 TEC will no longer be assessing financial viability, and all providers will be exempt from the TEC requirement to supply audited accounts. TEC will rely on NZQA's procedures for assessing the financial management practices and performance of providers, both funded and non-TEC funded.

In May 2009 the NZQA Board approved the criteria for maintaining registration as a private training establishment and also approved the annual return processes.

Continued on page 2

eQuate is the newsletter from the Quality Assurance Division (QAD) of the New Zealand Qualifications Authority. QAD is responsible for quality assurance of private training establishments (PTEs), government training establishments (GTEs), wānanga and Unitec.

Continued from page 1

Annual returns required

The annual return processes include the requirement that all providers submit an annual attestation in the form of a statutory declaration that the establishment meets the criteria for maintaining registration.

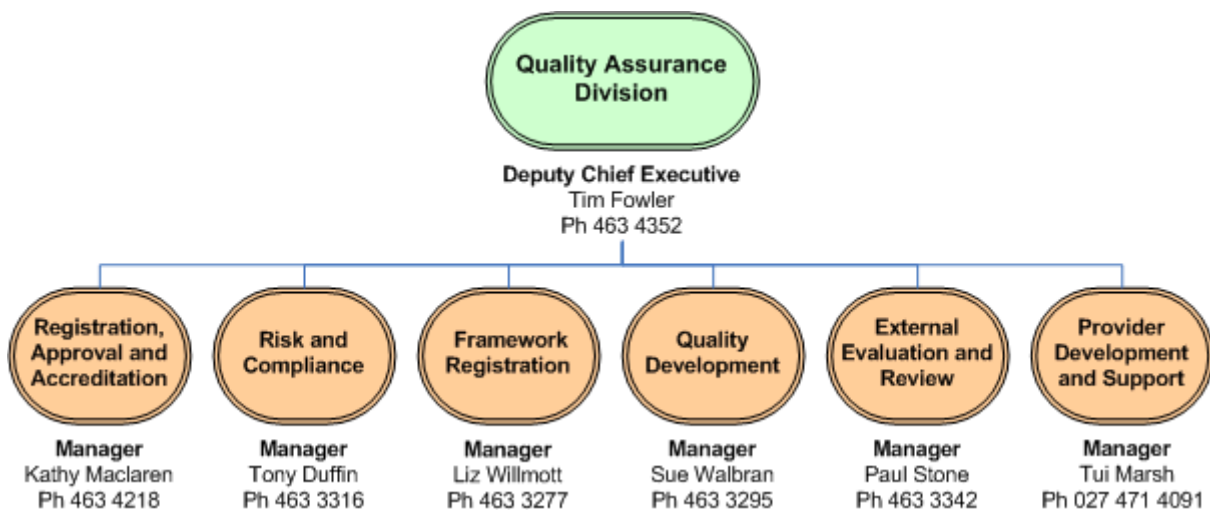
One of the criteria is that the establishment uses financial management practices that are sound and that it achieves acceptable financial performance to recognised professional standards. Providers must also submit an additional attestation from a chartered accountant that there are no immediate or foreseeable concerns over financial performance.

All providers to which TEC offered exemptions and/or extensions for submissions until June 2009 will need to forward to NZQA their professional attestation from a chartered accountant within 90 days from 18 June 2009.

The new criteria for maintaining registration as a private training establishment are expected to be gazetted for implementation before September 2009, with the annual return processes taking effect from 1 January 2010.

If you have further questions about any of the matters raised here please contact Tony Duffin, Manager Risk and Compliance (NZQA), email: Tony.Duffin@nzqa.govt.nz

Revised structure for Quality Assurance Division



The Quality Assurance Division of NZQA has revised its management structure for the delivery of the new quality assurance framework. The changes are effective from 1 July 2009.

Registration, Approval and Accreditation – Manager Kathy Maclaren

Responsible for all course approval, course accreditation, new PTE registrations, and change of PTE ownerships.

Risk and Compliance – Manager Tony Duffin

Responsible for all risk and compliance matters, financial monitoring, and student complaints.

Continued on page 3

Continued from page 2

Framework Registration – Manager Liz Willmott

Responsible for the quality assurance and registration of national standards and qualifications that have been developed by standard-setting bodies.

Quality Development – Manager Sue Walbran

Responsible for supporting TEOs in the evaluative approach to quality assurance, and evaluator training and support.

External Evaluation and Review – Manager Paul Stone

Responsible for all external evaluations and remaining audits.

Provider Development and Support – Manager Tui Marsh

Responsible for capability support to Maori and Pasifika organisations.

Key transition dates for New Quality Assurance Framework

With external evaluation and review set to begin in September, below are key dates for the transition to the new arrangements for the evaluative approach to quality assurance.

July 2009

- New Quality Assurance Division structure implemented
- Self-assessment resource available on NZQA website
- General information on external evaluation and review (EER) available on NZQA website
- NZQA contacts the institutions scheduled for EER from September-December 2009
- PTE registration: NZQA publishes the following documents on the NZQA website:
 - *Guidelines for the Registration of Private Training Establishments*
 - *Policies and Criteria for the Ongoing Registration of Private Training Establishments*
 - *How to Maintain Registration as a PTE*

August 2009

- NZQA Auckland office opens

September 2009

- Quality Assurance Standard One revoked
- New registration guidelines come into effect
- External evaluation and review commences
- PTEs on six-month audit cycle to be audited under *Policies and Criteria for the Ongoing Registration of Private Training Establishments*
- New compliance framework commences as described in *How to Maintain Registration as a PTE*

Continued on page 4

Continued from page 3

- NZQA publishes schedule for EERs for 2010

January 2010

- Annual returns commence.

Reminders

Computing standards transition dates

Providers currently offering the National Diploma in Computing (Level 6) and/or the National Diploma in computing (Level 7) have until December 2011 to report student results. No certificates will be awarded after 31 December 2011. For more information see the [April 2009 eQuate](#).

NZQA exits Electronic Media Standards

NZQA's National Qualifications Services has exited from standard-setting responsibility for the subfield of electronic media. This includes all standards within the domains of Radio, Electronic Multimedia, and Computer-Generated Imagery. For more information see the [April 2009 eQuate](#).